



ALL 304 STAINLESS STEEL SUPERPRO FACTORY BUILT CHIMNEY

For the chimney professional who demands the best!



A proud member and supporter of the following associations:



SuperPro Technical Data Sheet

For the Chimney Professional Who Demands the Best...

SuperPro incorporates the latest technology in factory-built chimney design; providing superior performance, durability, and safety. SuperPro is designed to accompany today's appliances, which are engineered to produce low emissions and high heat. This makes SuperPro the choice of professionals who are looking for a better-quality, factory built chimney system.

CERTIFICATION & APPLICATIONS

SuperPro is Safety Tested and Listed to applicable UL/ULC Standards. These include:

USA:UL 103-HT

Safety Standards for chimneys serving solid fuel and liquid fuel appliances. This chimney system has been designed for use on wood stoves, fireplaces and residential furnaces in the U. S. market.

Allowable Flue Gas Temperatures are:

Maximum Continuous	1,000° F / 540° C
Brief Forced Firing	1400° F / 760° C (60 min.)
Creosote Burn Out	2100° F / 1150° C (3 x 10 min.)

Canada: ULC S-604

Safety Standard for chimneys serving liquid/gas fuel appliances. This chimney system may be used on appliances that burn Oil or Gas. SuperPro may also be used with specifically listed factory-built fireplaces, as in the MAX! Fireplaces which are listed with either 6" or 7" diameter chimney.

Smart Choice Lifetime Warranty

The SuperPro Smart Choice Lifetime Warranty applies to all Chimney components (not just insulated lengths) making SuperPro chimney the smart choice, every time. (See written Warranty for details).

Enhanced Features

304 Stainless Steel construction of both the inner liner and outer casing make SuperPro HT chimney extremely corrosion resistant. Embossed couplers do not allow moisture to penetrate the chimney's outer wall. Sections simply 'twist-lock' together and may be secured with optional Locking Bands. The SuperPro product line features **Deluxe Chimney Support Components** that will enhance any installation. **Brass Trims** are used to embellish the chimney support component parts that may be installed inside the home.

Supports/Framing

All SuperPro Supports are designed to carry four times the combined weight of each system at maximum allowable height.

Support and Framing Dimensions Table				
	Ceiling Support	Wall Support	Cath. Ceiling Support	Roof Support
Support	50'	38'	38'	50'
Diameter	Framming Dimensions			
5" Dia.	12-3/8" x 12-3/8"	14-3/8" x 14-3/8"	11" x 11"	N/A
6" Dia.	12-3/8" x 12-3/8"	14-3/8" x 14-3/8"	12" x 12"	N/A
7" Dia.	13-3/8" x 13-3/8"	14-3/8" x 14-3/8"	13" x 13"	N/A
8" Dia.	14-3/8" x 14-3/8"	14-3/8" x 14-3/8"	14" x 14"	N/A

CONSTRUCTION

Inner Liner (Flue): Type 304 Series Stainless Steel
0.016" thickness

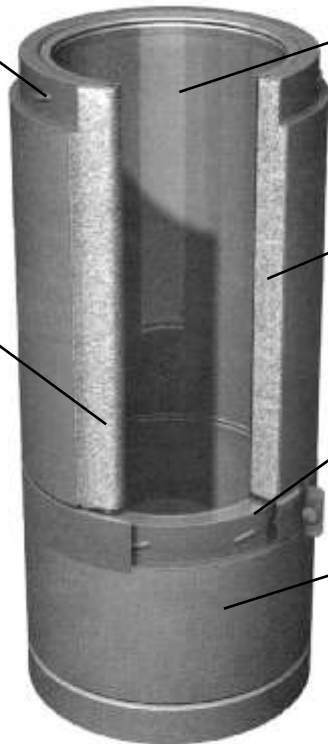
Outer Casing: Type 304 Stainless Steel
0.015" thickness

Note: All SuperPro Twist-Lock Couplers are embossed (not lanced) and seams are weather-proofed to prevent moisture from entering the chimney.

Insulation: The 1" space between the inner/outer walls is Solid Packed with Mineral Wool Fibre insulation to provide superior insulating qualities, in a "slim-line" design. Solid Pack design performs favorably to Blanket type and Air-Cooled chimney designs.

EMBOSSSED COUPLER
Prevents moisture penetration

"SOLID PACK" INSULATION
Augured for better insulating value (than blanket insulation) to keep outside temperatures low - for safety and inside temperatures high - for performance



304 STAINLESS STEEL INNER LINER
High grade material heats up quickly to enhance draft

PREMIUM FIBRE INSULATION
100% Mineral Wool (No Chlorides)

TWIST-LOCK CONNECTION
Easy Assembly

304 STAINLESS STEEL OUTER CASING
Premium material prevents corrosion



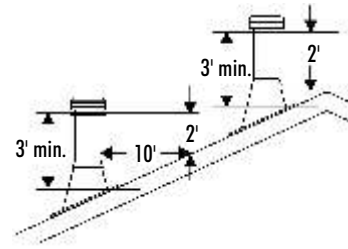
Smart Choice Lifetime Warranty

The SuperPro Smart Choice Lifetime Warranty applies to all Chimney components (not just insulated lengths) making SuperPro chimney the smart choice, every time. (See written Warranty for details).

Stainless Steel Chimney Lengths

HEIGHT REQUIREMENTS

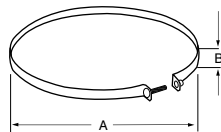
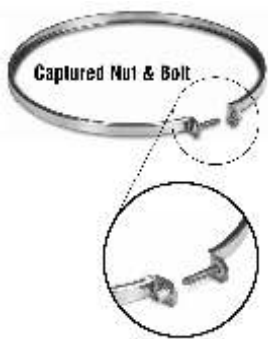
The chimney must extend at least three feet above the highest point where it passes through the roof surface and at least two feet higher than any part of the building within a horizontal distance of ten feet.



- Slim, advanced design allows for installation between 16" centers and still provides 2" clearance from combustible material.
- Secure twist-lock design couples chimney sections together with just a 1/8" turn.
- Sectional overlap of 1-1/8".
- Chimneys are sized according to the inner diameter and are available in 5, 6, 7 and 8".

Size	Dimensions			Product Code	Pack
	A	B	C		
5" x 36"	36"	5"	7"	SPR5L36	1
5" x 24"	24"	5"	7"	SPR5L24	1
5" x 18"	18"	5"	7"	SPR5L18	1
5" x 12"	12"	5"	7"	SPR5L12	1
5" x 6"	6"	5"	7"	SPR5L6	1
6" x 48"	48"	6"	8"	SPR6L48	1
6" x 36"	36"	6"	8"	SPR6L36	1
6" x 24"	24"	6"	8"	SPR6L24	1
6" x 18"	18"	6"	8"	SPR6L18	1
6" x 12"	12"	6"	8"	SPR6L12	1
6" x 6"	6"	6"	8"	SPR6L6	1
7" x 48"	48"	7"	9"	SPR7L48	1
7" x 36"	36"	7"	9"	SPR7L36	1
7" x 24"	24"	7"	9"	SPR7L24	1
7" x 18"	18"	7"	9"	SPR7L18	1
7" x 12"	12"	7"	9"	SPR7L12	1
7" x 6"	6"	7"	9"	SPR7L6	1
8" x 48"	48"	8"	10"	SPR8L48	1
8" x 36"	36"	8"	10"	SPR8L36	1
8" x 24"	24"	8"	10"	SPR8L24	1
8" x 18"	18"	8"	10"	SPR8L18	1
8" x 12"	12"	8"	10"	SPR8L12	1
8" x 6"	6"	8"	10"	SPR8L6	1

STAINLESS STEEL LOCKING BANDS

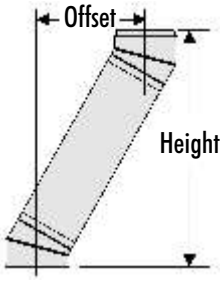


- Two flanges engage the grooves in each end of the adjoining sections holding them securely together.
- Locking Bands must be used:
 - on all sections that make up an offset.
 - on tee branch to attach a chimney length.
 - on any length suspended below the Cathedral or Roof Support.
- While Locking Bands are not required on other chimney lengths, their use is recommended for added safety and stability. It also provides a more attractive appearance.

Size	Dimensions		Product Code	Pack
	A	B		
5"	7"	7/16"	SPR5SLB	5
6"	8"	7/16"	SPR6SLB	5
7"	9"	7/16"	SPR7SLB	5
8"	10"	7/16"	SPR8SLB	5

Stainless Steel Elbows & Tees

CHIMNEY OFFSET CHARTS



This chart has three columns for elbow angle required to achieve your desired offset. The first column ("Offset") is the horizontal measurement, at the chimney center line, of the offset needed to get around an obstacle. The second column ("Height") is the height of the assembled offset elbow to the top of the return elbow. Column 3 shows the appropriate lengths required.

1. Determine the distance of the offset required.
2. On the chart, find the predetermined distance required for the elbow kit under the corresponding chimney diameter.

3. After finding the offset, follow across the chart to find the specified height and appropriate chimney lengths required under their corresponding diameters.

All measurements in inches. Offset tolerances \pm one inch.

30° OFFSET CHART

Offset	Height				Lengths Required								
	5"	6"	7"	8"	5"	6"	7"	8"	6"	12"	18"	24"	36"
3	2-3/4	3-1/8	3-1/2	10	11-5/8	13	14-1/2	-	-	-	-	-	-
5-1/4	5-1/4	5-5/8	6	14	15-7/8	17-1/4	18-3/8	1	-	-	-	-	-
9	8-1/4	8-5/8	9	19-1/4	21	22-3/8	24	-	1	-	-	-	-
11-1/4	11-1/4	11-5/8	12	24-1/2	26-1/4	27-5/8	29-1/8	-	1	-	-	-	-
14-1/4	14-1/4	14-5/8	15	29-3/4	31-3/8	32-7/8	32-3/8	-	-	1	-	-	-
-	16-5/8	17	17-1/8	-	35-5/8	37	38-1/2	1	-	-	1	-	-
25-1/4	20-1/4	20-5/8	21	39-1/2	41-7/8	43-1/4	44-3/4	-	-	-	-	1	-
-	22-5/8	23	23-1/2	-	46	47-1/2	49	1	-	-	-	1	-
-	22-5/8	26	26-1/2	-	51-1/4	52-5/8	54-1/8	-	1	-	-	-	1
-	28-5/8	29	29-1/2	-	56-3/8	57-3/8	59-3/8	-	-	1	-	-	1
-	31-5/8	32	32	-	61-5/8	63	64-1/2	-	-	-	1	-	1
-	34-1/8	34-1/2	35	-	65-7/8	67-1/4	68-3/4	1	-	-	-	1	1
-	37-1/8	37-1/2	38	-	71	72-1/2	74	-	1	-	-	-	1
42	-	-	-	70	-	-	-	-	-	-	-	-	2

15° OFFSET CHART

Offset	Height				Lengths Required								
	5"	6"	7"	8"	5"	6"	7"	8"	6"	12"	18"	24"	36"
1-1/2	1-1/8	1-1/8	1-1/4	9	10	10-1/4	10-3/4	-	-	-	-	-	-
2-1/8	2-3/8	2-3/8	2-1/2	13-1/2	14-1/4	15	15-5/8	1	-	-	-	-	-
4	4	4	4	19-1/8	20-1/2	20-3/4	21	-	1	-	-	-	-
5-1/2	5-1/2	5-1/2	5-1/2	25	26-1/4	26-1/2	26-3/4	-	-	1	-	-	-
7-1/2	7	7	7	30-1/2	32	32-1/4	32-1/2	-	-	-	1	-	-
-	8-3/8	8-3/8	8-3/8	-	36-3/4	37	37-1/4	1	-	-	1	-	-
10-1/8	10-1/8	10-1/4	10-1/4	42	43-5/8	44	44-1/8	-	-	-	-	-	1
-	11-3/8	11-1/2	11-1/2	-	48-3/8	48-5/8	48-7/8	1	-	-	-	-	1
-	13	13	13	-	54-1/8	54-3/8	54-5/8	-	1	-	-	-	1
-	14-1/2	14-1/2	14-5/8	-	60	60-1/8	60-3/8	-	-	1	-	-	1
-	16-1/8	16-1/8	16-1/8	-	65-3/4	66	66-1/4	-	-	-	1	-	1
-	17-3/8	17-3/8	17-3/8	-	70-1/2	70-3/4	71	1	-	-	-	1	1
-	19	19	19	-	76-1/4	76-1/2	76-3/4	-	1	-	-	-	1
20	-	-	-	76	-	-	-	-	-	-	-	-	2

45° OFFSET CHART

Offset	Height				Lengths Required								
	5"	6"	7"	8"	5"	6"	7"	8"	6"	12"	18"	24"	36"
4-1/2	-	5	5-1/4	10-1/8	-	11	12	-	-	-	-	-	-
8	-	8-1/2	8-3/4	13-1/2	-	14-1/4	15	1	-	-	-	-	-
12-1/8	-	13-3/8	14	17-1/2	-	18-1/2	9-1/2	-	1	-	-	-	-
16-1/2	-	17	16-1/2	21-1/4	-	23	24-1/4	-	-	1	-	-	-
20-3/4	-	22	21-1/2	26-3/4	-	27	27-1/4	-	-	-	1	-	-
-	-	25-3/8	-	-	-	31-5/8	-	1	-	-	-	1	-
30-1/4	-	30-1/2	31	33-5/8	-	34-1/2	35-1/2	-	-	-	-	-	1
-	-	33-1/8	-	-	-	38-1/8	-	1	-	-	-	-	1
-	-	37	-	-	-	42-3/8	-	-	1	-	-	-	1
-	-	41-1/4	-	-	-	46-1/2	-	-	-	1	-	-	1
-	-	46-1/2	-	-	-	51-7/8	-	-	-	-	1	-	1
-	-	50	-	-	-	56-1/4	-	1	-	-	-	-	1
-	-	54-1/4	-	-	-	60-1/2	-	-	1	-	-	-	1
58	-	54-1/2	56	58-1/2	-	61-1/2	60-1/4	-	-	-	-	-	2

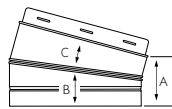
INSULATED 15°, 30° AND 45° ELBOW KITS

- The Insulated Elbow is used when an offset is required.
- Locking Bands must be used on all elbows.
- A maximum of 6 feet is allowable between offsets.
- Elbow is fully insulated and can be used at the same 2" clearance as chimney lengths.
- Elbow support must be used with all offset installations.
- Elbows do not have locking ridges and can be rotated to attain optimum positioning, and allow chimney to return to correct vertical alignment, prior to installing Locking Bands.

ELBOW KITS INCLUDE:
2 elbows, 4 Locking Bands & 1 Elbow Support

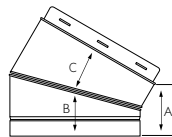


15° ELBOW



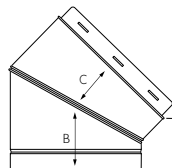
Size	Dimensions			Product Code	Pack
	A	B	C		
15° - 5"	3-3/8"	2-7/16"	1-15/16"	SPR5EL15K	1
15° - 6"	3-3/8"	2-1/2"	2"	SPR6EL15K	1
15° - 7"	3-3/8"	2-9/16"	2-1/16"	SPR7EL15K	1
15° - 8"	3-3/8"	2-5/8"	2-1/8"	SPR8EL15K	1

30° ELBOW



Size	Dimensions			Product Code	Pack
	A	B	C		
30° - 5"	2-3/4"	2-9/16"	2-9/16"	SPR5EL30K	1
30° - 6"	3-1/4"	3-1/16"	2-9/16"	SPR6EL30K	1
30° - 7"	3-3/4"	3-7/16"	2-15/16"	SPR7EL30K	1
30° - 8"	4-1/4"	3-7/8"	3-3/8"	SPR8EL30K	1

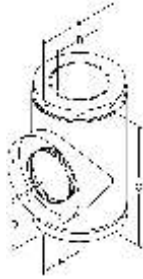
45° ELBOW



Size	Dimensions			Product Code	Pack
	A	B	C		
45° - 5"	1-15/16"	2-3/4"	2-3/8"	SPR5EL45K	1
45° - 6"	2-1/8"	3-1/8"	2-9/16"	SPR6EL45K	1
45° - 7"	2-3/8"	3-3/8"	3"	SPR7EL45K	1
45° - 8"	2-9/16"	3-3/4"	3-5/16"	SPR8EL45K	1

Stainless Steel Elbows & Tees continued

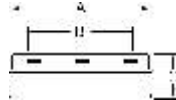
INSULATED TEE WITH PLUG



- The insulated chimney tee is used for through-the-wall installation using a wall support.
- A chimney length is attached to the tee branch using a Locking Band to pass safely through a wall.

Size	Dimensions					Product Code	Pack
	A	B	C	D	E		
5"	7"	5"	10-1/2"	5"	5"	SPR5ITP	1
6"	8"	6"	11-1/2"	5-5/8"	5-3/4"	SPR6ITP	1
7"	9"	7"	12-1/4"	6-1-4"	6-3/16"	SPR7ITP	1
8"	10"	8"	13-3-8"	6-5/8"	6-1/2"	SPR8ITP	1

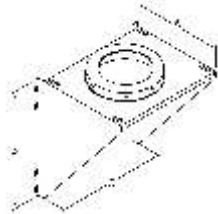
INSULATED TEE PLUG



Size	Dimensions			Product Code	Pack
	A	B	C		
5"	7"	5"	2-7/8"	J51TPI	1
6"	8"	6"	2-7/8"	J61TPI	1
7"	9"	7"	2-7/8"	J71TPI	1
8"	10"	8"	2-7/8"	J81TPI	1

Supports

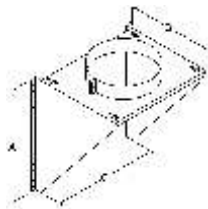
ADJUSTABLE WALL SUPPORT



- Used to support the chimney on a through-the-wall installation.
- Will support up to 38 feet of chimney.
- Includes wall support top plate with female coupler attached, male coupler, side brackets and hardware.

Size	Dimensions			Product Code	Pack
	A	B	C		
5"	17-1/8"	10"	16"	JSC5AWS	1
6"	17-1/8"	11"	16"	JSC6AWS	1
7"	17-1/8"	12"	16"	JSC7AWS	1
8"	17-1/8"	13"	16"	JSC8AWS	1

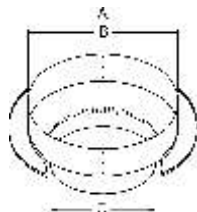
ADJUSTABLE INTERMEDIATE WALL SUPPORT



- Used as supplementary support when chimney system height exceeds maximum height allowed by Wall Support.
- Supports an additional 38 feet of chimney.
- Includes Top Plate, Support Band, Side Brackets and Hardware.

Size	Dimensions			Product Code	Pack
	A	B	C		
6"	11"	17-1/8"	16"	JSC6AIWS	1
7"	12"	17-1/8"	16"	JSC7AIWS	1
8"	13"	17-1/8"	16"	JSC8AIWS	1

DECORATOR CEILING SUPPORT-SPUN

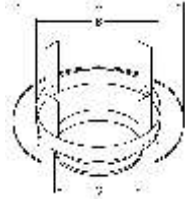


- Supports up to 50 feet of chimney.
- Matte black support gives a finished appearance.

Size	Dimensions			Product Code	Pack
	A	B	C		
5"	17-7/8"	11-3/8"	7-1/4"	JSC5DCSS	1
6"	17-7/8"	12-3/8"	8-1/4"	JSC6DCSS	1
7"	17-7/8"	13-3/8"	9-1/4"	JSC7DCSS	1
8"	19-5/8"	14-3/8"	10-1/4"	JSC8DCSS	1

Supports continued

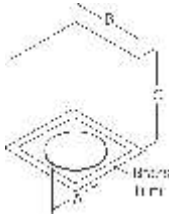
DECORATOR CEILING SUPPORT



- For use in ceiling support installations
- Supports up to 50 feet of chimney
- Matte black finish with brass finishing ring, support gives a premium finished appearance.

Size	Dimensions			Product Code	Pack
	A	B	C		
5"	17 7/8"	11 3/8"	7 1/4"	SPR5CSB	1
6"	17 7/8"	12 3/8"	8 1/4"	SPR6CSB	1
7"	17 7/8"	13 3/8"	9 1/4"	SPR7CSB	1
8"	19 5/8"	14 3/8"	10 1/4"	SPR8CSB	1

CATHEDRAL CEILING SUPPORT BOX

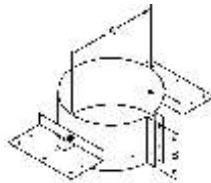


- Used in pitched ceiling support installations.
- Supports up to 38 feet of chimney.
- Matte black finish with stylish brass finishing trim.

Size	Dimensions			Product Code	Pack
	A	B	C		
5"	7-3/16"	11"	17"	SPR5CCSB	1
6"	8-3/16"	12"	17"	SPR6CCSB	1
7"	9-3/16"	13"	17"	SPR7CCSB	1
8"	10-3/16"	14"	17"	SPR8CCSB	1

Add JUSI (pg. 10) to the Cathedral Ceiling Support Box for increased performance and safety.

ROOF SUPPORT

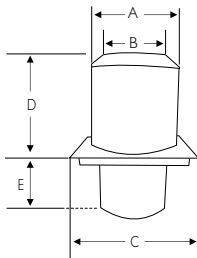


- The Roof Support may be used on a floor, ceiling or roof and adjusts to any roof pitch.
- It may be used above an offset to support the offset or as a supplementary support when the chimney height exceeds that of the primary support.
- The Roof Support will support a total height of 50 feet of chimney.

Size	Dimensions		Product Code	Pack
	A	B		
5"	7"	5"	JSC5RS	1
6"	8"	5"	JSC6RS	1
7"	9"	5"	JSC7RS	1
8"	10"	5"	JSC8RS	1

Shields

ATTIC INSULATION SHIELD



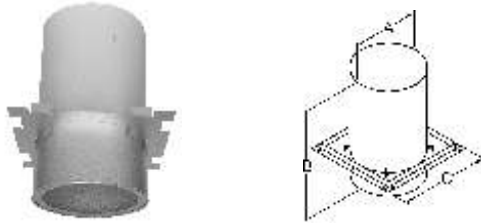
- The AIS must be installed where the chimney enters the attic space in any installation.
- When fully extended the AIS provides joist shielding.
- Designed to keep insulation away from the chimney, and to maintain the mandatory 2" clearance to combustibles.
- Must be used when installing through a second floor.

Size	Dimensions					Product Code	Pack
	A	B	C	D	E		
5"	11"	7"	13"	11-13/16"	8-1/2"	JSC5AIS	1
6"	12"	8"	14"	11-13/16"	8-1/2"	JSC6AIS	1
7"	13"	9"	15"	11-13/16"	8-1/2"	JSC7AIS	1
8"	14"	10"	16"	11-13/16"	8-1/2"	JSC8AIS	1

Add JUSI (pg. 10) to the Attic Insulation Shield for increased performance and safety.

Shields continued

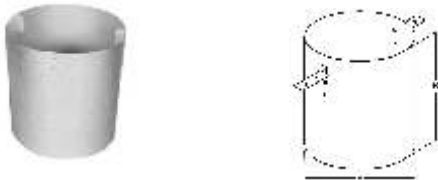
FIRESTOP RADIATION SHIELD



- Also known as a Firestop Joist Shield.
- Required where the chimney passes from one lower living space to another living space.
- Maintains the mandatory 2" clearance to combustibles.

Size	Dimensions			Product Code	Pack
	A	B	C		
5"	13"	9"	19"	JSC5FRS	1
6"	14"	10"	19"	JSC6FRS	1
7"	15"	11"	19"	JSC7FRS	1
8"	16"	12"	19"	JSC8FRS	1

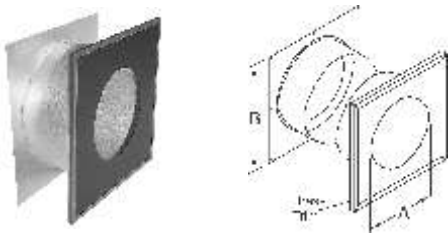
RAFTER RADIATION SHIELD



- The RRS must be installed where the chimney is enclosed immediately below the roof line

Size	Dimensions		Product Code	Pack
	A	B		
5"	9"	12"	JSC5RRS	1
6"	10"	12"	JSC6RRS	1
7"	11"	12"	JSC7RRS	1
8"	12"	12"	JSC8RRS	1

WALL THIMBLE with BRASS TRIM



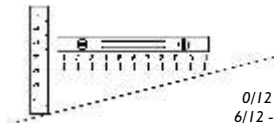
Add JUSI (pg. 10) to the Wall Thimble for increased performance and safety.

- Used in a wall support installation.
- Radiation shield is included with spacers which maintain the mandatory 2" clearance to combustibles.
- Attractive matte black finishing trim is included with stylish brass finish.
- Extends to fit 7" wall thickness.

Size	Dimensions		Product Code	Pack
	A	B		
5"	7-1/8"	16"	SPR5WTB	1
6"	8-1/8"	16"	SPR6WTB	1
7"	9-1/8"	16"	SPR7WTB	1
8"	10-1/8"	16"	SPR8WTB	1

Flashings and Storm Collars

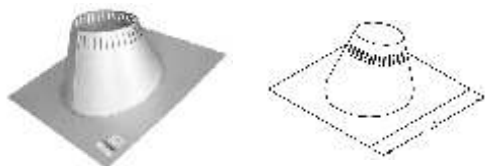
ROOF FLASHING SELECTION CHART



In this example, the pitch is 3/12.
 0/12 - 6/12 Roof Pitch = JSC 6 or 7 AAF
 6/12 - 12/12 Roof Pitch = JSC 6 or 7 AF2

To determine what Roof Flashing you'll require, you must work out the pitch of your roof. To determine the pitch, you'll need two rulers and a level. Measure the number of inches from the end of the level down to the roof.

ADJUSTABLE FLASHING ASSEMBLY- FLAT to 6/12

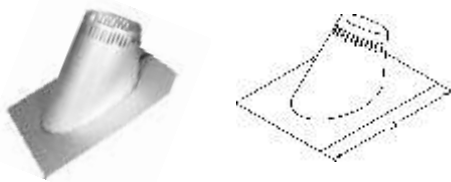


- Used where the chimney passes through a roof with a pitch of Flat to 6/12.
- Comes complete with Storm Collar.
- All seams are sealed with Silicone Sealant.
- Galvalume construction.

Size	Dimensions	Product Code	Pack
	A		
5"	24" x 24"	JSC5AAF-3	3
6"	24" x 24"	JSC6AAF-3	3
7"	24" x 24"	JSC7AAF-3	3
8"	27-1/2" x 27-1/2"	JSC8AAF-3	3

Flashings and Storm Collars continued

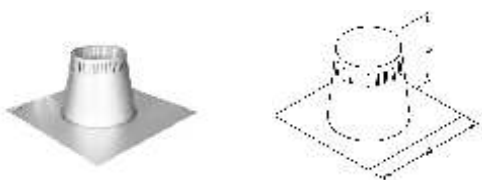
ADJUSTABLE FLASHING ASSEMBLY- 6/12 to 12/12



- Used where the chimney passes through a roof with a pitch of 6/12 to 12/12.
- Comes complete with Storm Collar.
- All seams are sealed with Silicone Sealant.
- Galvalume construction.

Size	Dimensions	Product Code	Pack
	A		
5"	30" x 21-1/2"	JSC5AF2-3	3
6"	30" x 21-1/2"	JSC6AF2-3	3
7"	30" x 21-1/2"	JSC7AF2-3	3
8"	30" x 21-1/2"	JSC8AF2-3	3

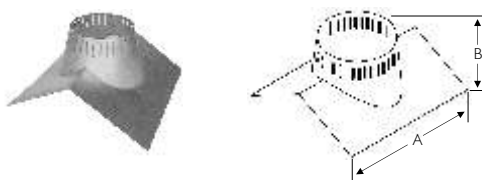
TALL CONE FLASHING



- Used on flat roof surfaces.
- All seams are sealed with Silicone Sealant.
- Comes complete with Storm Collar.

Size	Dimensions		Product Code	Pack
	A	B		
5"	24"	12"	JSC5ATC	3
6"	24"	12"	JSC6ATC	3
7"	24"	12"	JSC7ATC	3
8"	24"	12"	JSC8ATC	3

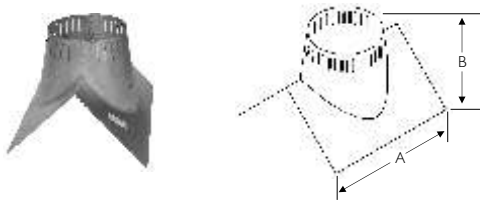
PEAK FLASHING - 3/12 to 6/12



- Available in 7" only.
- Required where the chimney passes through a peaked roof with a pitch of 3/12 to 6/12.
- Comes complete with Storm Collar.

Size	Dimensions		Product Code	Pack
	A	B		
7"	22"	10"	JSC7P1	1

PEAK FLASHING - 7/12 to 9/12



- Available in 7" only.
- Required where the chimney passes through a peaked roof with a pitch of 7/12 to 9/12.
- Comes complete with Storm Collar.

Size	Dimensions		Product Code	Pack
	A	B		
7"	20"	14"	JSC7P2	1

RUBBER BOOT FLASHING KIT



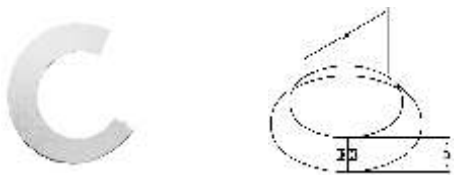
THIS KIT INCLUDES:

- Special Storm Collar
- Rubber Boot
- Spacer Kit
- Special Boot Mounting Screws

- This kit fits 5", 6", 7" and 8" Chimneys
- Required where the chimney passes through a corrugated roof.
- Rubber Boot Flashing fits roof pitches up to 12/12" (10/12 for 8").

Size	Product Code	Pack
ALL	200275	1

GALVALUME STORM COLLAR



- Used in conjunction with Roof Flashing to keep precipitation out.

Size	Dimensions		Product Code	Pack
	A	B		
5"	7"	4-1/2"	JSC56SC-1	1
6"	8"	4-1/2"	JSC56SC-1	1
7"	9"	4-1/2"	JSC78SC-1	1
8"	10"	4-1/2"	JSC78SC-1	1

SILICONE SEALANT FOR STORM COLLAR

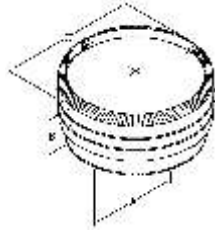


- Used to seal Storm Collar to chimney length above cone of flashing.

Size	Product Code	Pack
3 ounce tube	JRTV	1

Rain Caps

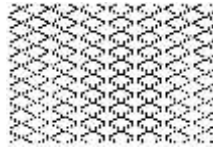
DELUXE RAIN CAP



- Advanced design, premium quality stainless steel.
- Provides protection against the elements
- Twist-lock connection for secure installation.

Size	Dimensions			Product Code	Pack
	A	B	C		
5"	7"	7-1/8"	11-1/4"	SPR5DRC	1
6"	8"	7-1/4"	11-1/4"	SPR6DRC	1
7"	9"	7-1/2"	13-1/4"	SPR7DRC	1
8"	10"	7-5/8"	14-1/4"	SPR8DRC	1

SPARK ARRESTOR

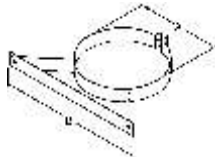


- Stainless steel mesh wire fits inside Rain Cap (JSC*RC)

Size	Dimensions	Product Code	Pack
5"	4-1/2" x 26"	JSC5SPAR	10
6"	4-1/2" x 26"	JSC6SPAR	10
7"	4-1/2" x 29"	JSC7SPAR	10
8"	4-1/2" x 32"	JSC8SPAR	10

Parts and Accessories

WALL BAND



- Stainless steel construction.
- Provides lateral support for the chimney when installed adjacent to a wall.
- Maintains the mandatory 2" clearance to combustibles.
- Installed on first length above the Tee, then every 8 feet thereafter.

Size	Dimensions		Product Code	Pack
	A	B		
5"	7"	17"	JSC5WB	1
6"	8"	17"	JSC6WB	1
7"	9"	17"	JSC7WB	1
8"	10"	17"	JSC8WB	1

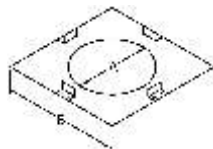
BLACK STOVE PIPE ADAPTER



- For a quick and easy transition from black stove pipe to factory-built chimney.
- Twist-lock for easy connection.

Size	Dimensions			Product Code	Pack
	A	B	C		
5"	7"	5"	7"	JSC5ASE	1
6"	8"	6"	7"	JSC6ASE	1
7"	9"	7"	7"	JSC7ASE	1
8"	10"	8"	7"	JSC8ASE	1

FINISHING PLATE



- Used where the chimney passes through a soffit to provide a finished appearance.
- Maintains the mandatory 2" clearance to combustibles.

Size	Dimensions		Product Code	Pack
	A	B		
5"	7-1/8"	13"	JSC5FP	1
6"	8-1/8"	14"	JSC6FP	1
7"	9-1/8"	15"	JSC7FP	1
8"	10-1/8"	16"	JSC8FP	1

Parts and Accessories continued

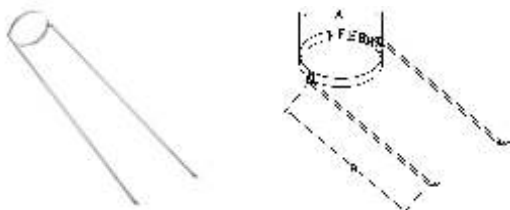
MATTE BLACK TRIM COLLAR WITH BRASS TRIM



- Used on wall support installations when passing through a non-combustible wall.
- Matte black finish with brass trim for an enhanced hand-crafted appearance.

Size	Dimensions		Product Code	Pack
	A	B		
5"	7-1/8"	16-1/8"	SPR5TCB	10
6"	8-1/8"	16-1/8"	SPR6TCB	10
7"	9-1/8"	16-1/8"	SPR7TCB	10
8"	10-1/8"	16-1/8"	SPR8TCB	10

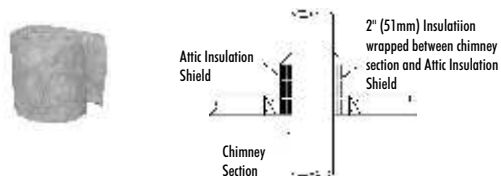
ADJUSTABLE UNIVERSAL ROOF GUY KIT



- Used when more than 5 feet of chimney extends from the roof.
- The kit includes two 5 foot rods and an adjustable band.
- Each rod extends to approximately 10 feet.
- The adjustable band will fit 5" to 8" size chimney.

Size	Dimensions		Product Code	Pack
	A	B		
7"-10"	60"	120"	JURGK-1	1

JUSI-UNIVERSAL SHIELDING INSULATION



- Insulation for use with:
 - Attic Insulation Shield (JSC*AIS)
 - Wall Thimble (JSC*WT)
 - Cathedral Ceiling Support (JSC*CCS)
- Stops cold air infiltration into the dwelling.
- Provides additional protection against heat from the chimney.

Size	Dimensions	Product Code	Pack
Universal		JUSI	1

Fireplace Parts

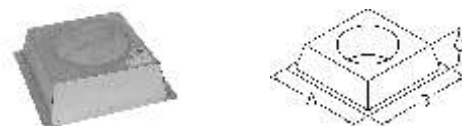
ADAPTOR PLATE



- To be used with specifically listed factory built fireplaces.

Size	Dimensions		Product Code	Pack
	A	B		
5"	7"	11-5/8"	JSC5AP	1
6"	8"	11-5/8"	JSC6AP	1
7"	9"	11-5/8"	JSC7AP	1
8"	10"	11-5/8"	JSC8AP	1

INSULATED CHASE PLUG



- Recommended to reduce air infiltration through the chase in cold climates.
- Maintains the thermal envelope of your home.
- For use with wood-burning fireplaces certified with Model FC chimney.

Size	Dimensions			Product Code	Pack
	A	B	C		
7"	15"	15"	4-1/4"	JSC7CP	1

INSULATED 30° OFFSET WALL PLUG



- For use where the chimney passes through a wall at a 30° angle.
- Insulated to maintain the thermal envelope of your home.
- For use with wood-burning fireplaces certified with Model FC chimney

Size	Dimensions			Product Code	Pack
	A	B	C		
7"	16-1/4"	34"	4-1/4"	JSC7WC	1

Fireplace Parts continued

45° FACE PLATE



- For use where the chimney passes through a wall at a 45° angle.
- For use with wood burning fireplaces certified with Model FC chimney

Size	Dimensions		Product Code	Pack
	A	B		
7"	31"	15"	JSC7WFP4	1

Support Kits

SuperPro has put together 3 chimney kits to get your project done . . .

SuperPro has taken the guess work out of chimney installation by putting the most common parts for each installation all in one box. These 3 kits depict the most common installations. Simply decide which of these scenarios fits your need, then pick up your chimney lengths, roof flashing and elbows (if required).

CEILING SUPPORT KIT

When your chimney goes up through a ceiling, then thru the roof, you may choose the MODEL SPR DECORATOR CEILING SUPPORT INSTALLATION KIT - SPR*DCKSK

- Deluxe Rain Cap
- Attic Insulation Shield
- Decorator Ceiling Support
- Stove Pipe Adaptor

NOTE: In Canada, for a two story application, purchase the Ceiling Support Installation Kit and install an additional Firestop Radiation Shield to provide proper fire stopping. In USA, for a two story application, purchase the Ceiling Support Installation Kit and install an additional Firestop Radiation Shield to provide proper fire stopping.

. . . Now you just need your roof flashing and chimney lengths.

SIZE	PRODUCT CODE
5"	SPR5DCKSK
6"	SPR6DCKSK
7"	SPR7DCKSK
8"	SPR8DCKSK



Cathedral Ceiling Support Kit

When your chimney goes out a cathedral or open beam ceiling, you may choose the MODEL SPR CATHEDRAL CEILING SUPPORT INSTALLATION KIT - SPR*CCSK

- Deluxe Rain Cap
- Cathedral Ceiling Support
- Draw Band
- Trim Kit
- Stove Pipe Adaptor

. . . Now you just need your roof flashing and chimney lengths

SIZE	PRODUCT CODE
6"	SPR6CCSK
7"	SPR7CCSK
8"	SPR8CCSK



Wall Support Kit

When your chimney goes out a wall and then runs straight up, you'll need the MODEL SPR WALL SUPPORT INSTALLATION KIT - SPR*WSK

- Deluxe Rain Cap
- Wall Bands (2)
- StovePipe Adaptor
- Wall Thimble
- Stainless Steel Tee with Plug
- Adjustable Wall Support

. . . Now you just need:

- Vertical Chimney lengths
- Through the wall length (must extend at least 3" into the room)
- 12" chimney length or insulated tee plug (installed below the stainless steel tee)

SIZE	PRODUCT CODE
5"	SPR5WSK
6"	SPR6WSK
7"	SPR7WSK
8"	SPR8WSK

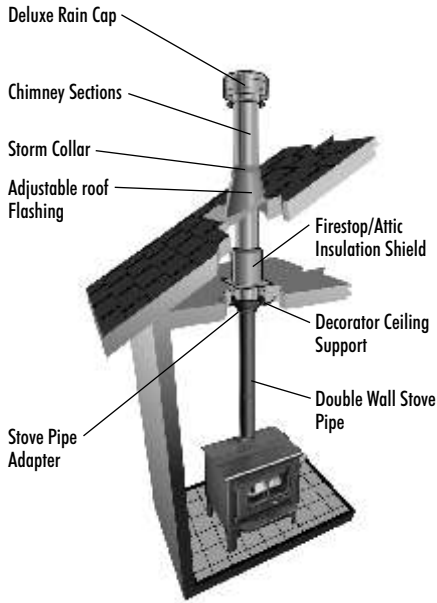


Typical Installations

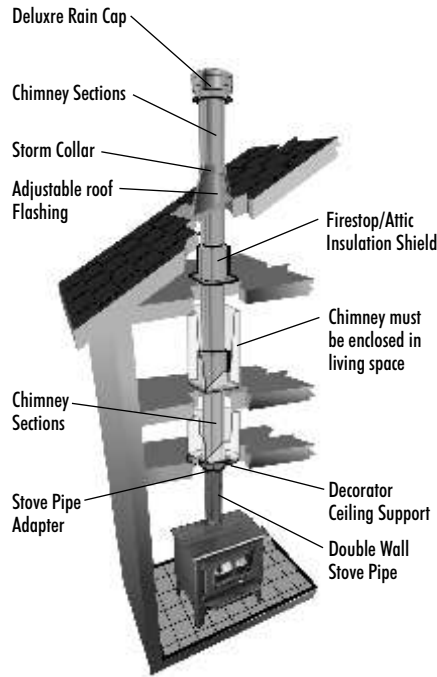


DECORATOR CEILING SUPPORT INSTALLATIONS

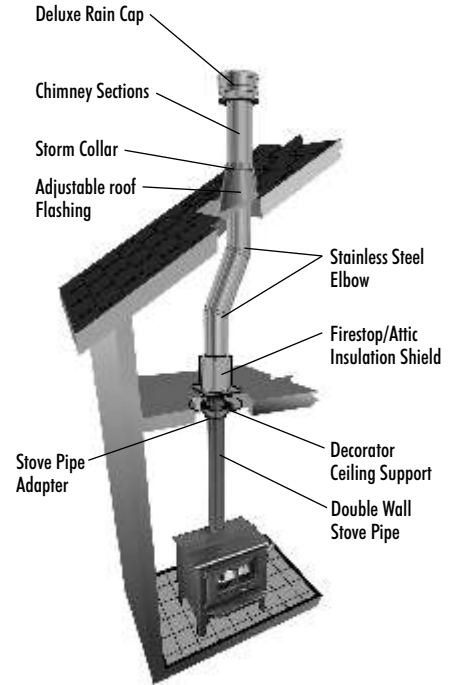
One Storey



Two Storey

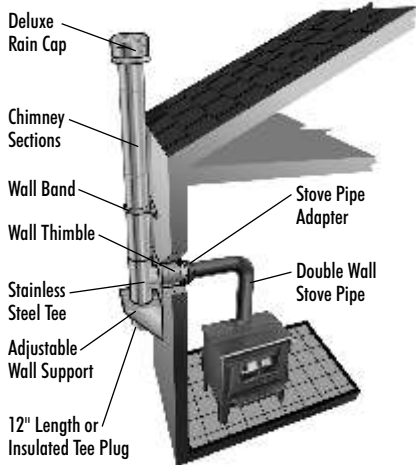


Elbow Installation

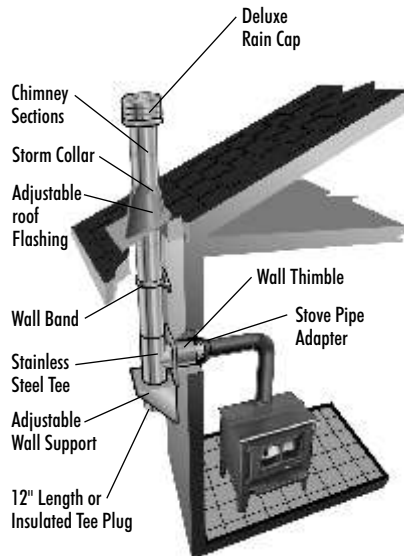


WALL SUPPORT INSTALLATIONS

One Storey

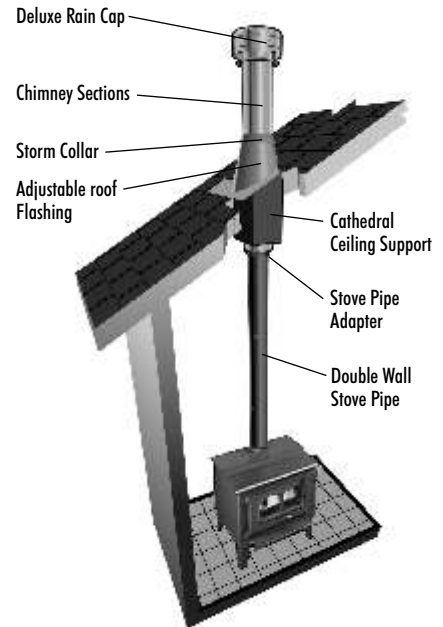


Through a soffit



CATHEDRAL SUPPORT INSTALLATION

With Cathedral Ceiling Support Box



SPR001-E R&B 3499 - 11/06



SELKIRK CANADA CORPORATION

375 GREEN ROAD, STONEY CREEK, ON L8E 4A5 • TEL: 1-888-SELKIRK (735-5475) • FAX: 1-866-835-9624

web: www.superpro.com

email: info@selkirkcanada.com